

## GATE150 - GATE300 Gate Valve

### Product Description

Gate valves are primarily designed for on-off services. Gate Valves consist of Body, Bonnet, Gate, Stem outside screw & Yoke, rising Stem with Non Rising Hand wheel, Integral seat as standard. Open & Closed Indicator with lockable Handwheel.

### Features

Gate valves offer positive shutoff with minimal pressure drop; this makes them ideal for controlling liquid or gas flow in various applications. They're also highly effective and easy to maintain due to their robust construction and simple design.

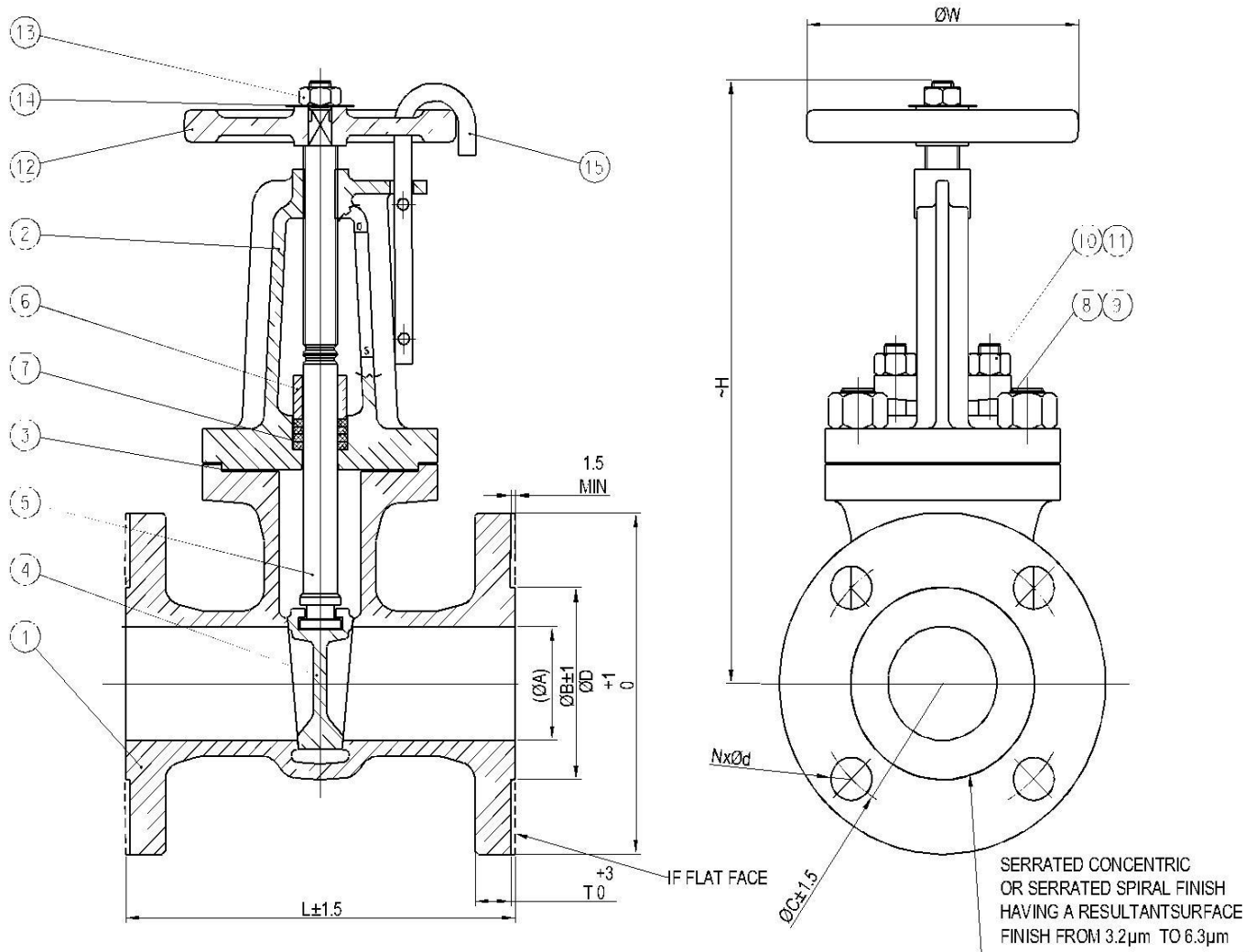
Gate valves are operated manually or by an automated device such as a motor, solenoid, actuator, etc. When the gate is closed, it acts as a barrier and blocks flow. When open, the gate swings away from the seat allowing full flow through the valve. When closed, fluid flow is completely blocked.



Technical Data #150		
Design Standard	MSS SP80 / BS 5154 / BS EN 12288	
Size	DN15 TO DN100	
Flanges	ASME B16.5 #150	
End To End	ASME B16.10 #150	
Testing	EN 12266-1, API 598	
Max pressure:- 19 BAR		Min Temperature:- -29°C
Max pressure:- 7.9 BAR		Min Temperature:- 260°C
Testing Pressure (Bar G) at Ambient Condition (-29°C to 38°C )		
Shell ( Hydro)	Seat ( Hydro)	Seat ( Air)
28.5	21	N/A
Testing Duration (Sec)		
As Per STD.	As Per STD.	N/A
Certifications		
Material Test	BS EN 10204-3.1	

Technical Data #300		
Design Standard	MSS SP80 / BS 5154 / BS EN 12288	
Size	DN15 TO DN80	
Flanges	ASME B16.5 #300	
End To End	ASME B16.10 #300	
Testing	EN 12266-1, API 598	
Max pressure:- 49.6 BAR		Min Temperature:- -29°C
Max pressure:- 20.6 BAR		Min Temperature:- 260°C
Testing Pressure (Bar G) at Ambient Condition (-29°C to 38°C )		
Shell ( Hydro)	Seat ( Hydro)	Seat ( Air)
74.4	54.5	N/A
Testing Duration (Sec)		
As Per STD.	As Per STD.	As Per STD.
Certifications		
Material Test	BS EN 10204-3.1	

## General Assembly View





## Bill of Materials

S.NO.	PART	MATERIAL
1	Body	NAB(ASTM B148 C95800)
2	Bonnet	NAB(ASTM B148 C95800)
3	Bonnet Joint	SS-316+Graphite
4	Wedge	NAB (ASTM B148 C95800) / MONEL (ASTM GR M35-1)
5	Stem	NAB (ASTM B150 C63200) / MONEL (ASTM B865 N05500)
6	Gland	NAB(ASTM B148 C95800)
7	Gland Packing	GRAPHITE
8	Bonnet Stud	ASTM A193 Gr.B7
9	Bonnet Nut	ASTM A194 Gr.2H
10	Gland Stud	ASTM A193 Gr.B7
11	Gland Nut	ASTM A194 Gr.2H
12	Hand wheel	ASTM A351 CF8M
13	Hand wheel nut	ASTM A194 Gr.2H
14	Rating disc	SS-316
15	Crook Lock	SS-316

## Dimensions Tables

### #150 ASME B16.5

SIZE	ΦA	ΦB	ΦC	ΦD	T	R.F	NxΦd	L	~H	ΦW
DN15	12.7	35.1	60.5	89	7.9	1.5	4x5/8"	108	167	82.5
DN20	19.1	42.9	69.8	99	8.6		4x5/8"	117	167	82.5
DN25	25.4	50.8	79.2	108	9.7		4x5/8"	127	194	95.2
DN40	38.1	73	98.6	127	12.7		4x5/8"	165	270	114
DN50	50.8	91.9	120.6	152	14.2		4x3/4"	178	270	127
DN65	63.5	104.6	139.7	178	15.7		4x3/4"	190	314	152.4
DN80	76.2	127	152.4	190	17.5		4x3/4"	203	497	203
DN100	101.6	157.2	190.5	229	22.4		8x3/4"	229	530	254

### #300 ASME B16.5

SIZE	ΦA	ΦB	ΦC	ΦD	T	R.F	NxΦd	L	~H	ΦW
DN15	12.7	35.1	66.5	95	12.7	1.5	4x5/8"	140	232	89
DN20	19.1	42.9	82.6	117	14.2		4x3/4"	152	232	152
DN25	25.4	50.8	88.9	124	15.7		4x3/4"	165	241	152
DN40	38.1	73	114.3	155	19		4x7/8"	190	286	152
DN50	50.8	91.9	127	165	20.6		8x3/4"	216	330	178
DN65	63.5	104.6	149.4	190	23.9		8x7/8"	241	343	203
DN80	76.2	127	168.1	210	26.9		8x7/8"	282	470	203